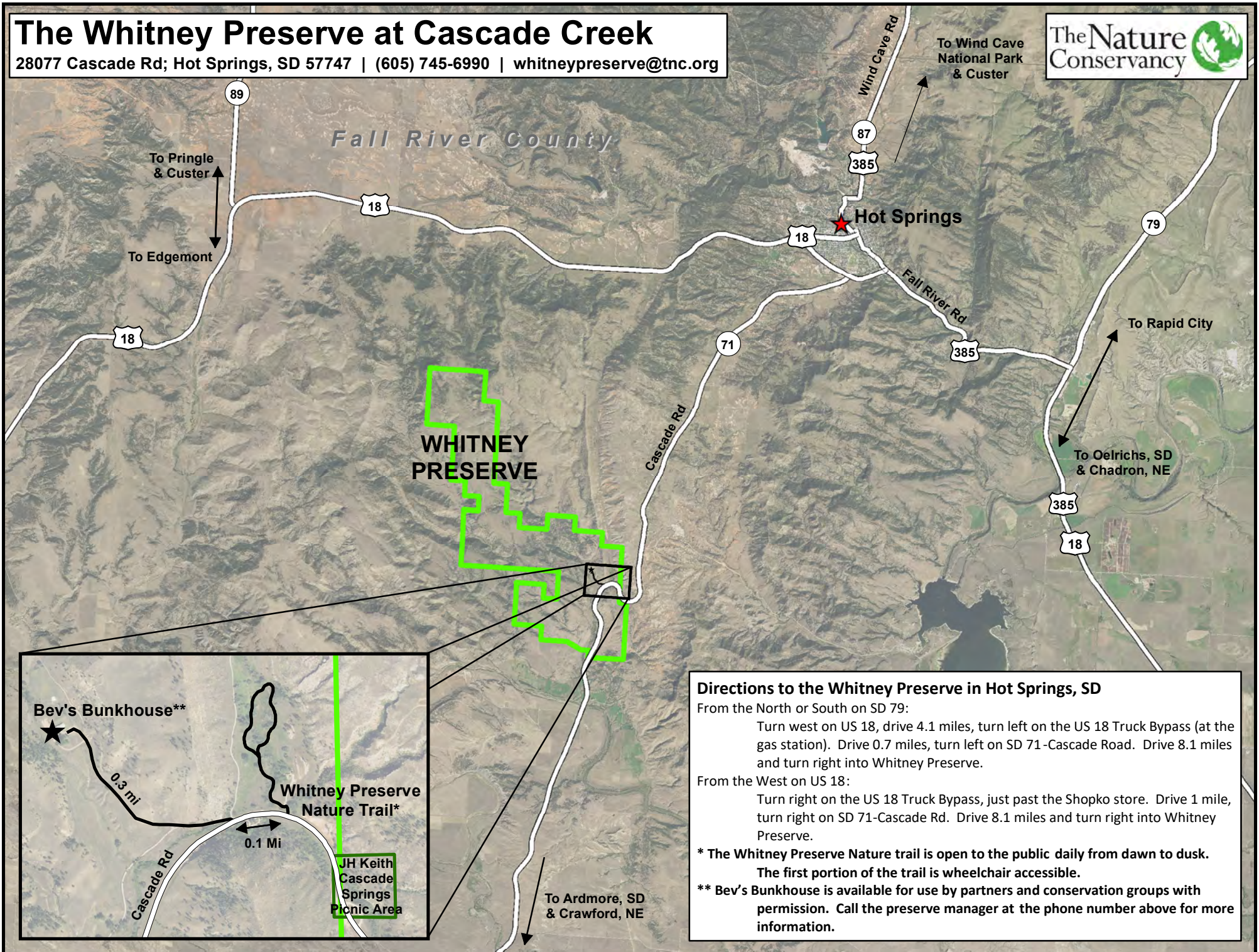


The Whitney Preserve at Cascade Creek

28077 Cascade Rd; Hot Springs, SD 57747 | (605) 745-6990 | whitneypreserve@tnc.org



Directions to the Whitney Preserve in Hot Springs, SD

From the North or South on SD 79:
Turn west on US 18, drive 4.1 miles, turn left on the US 18 Truck Bypass (at the gas station). Drive 0.7 miles, turn left on SD 71-Cascade Road. Drive 8.1 miles and turn right into Whitney Preserve.

From the West on US 18:
Turn right on the US 18 Truck Bypass, just past the Shopko store. Drive 1 mile, turn right on SD 71-Cascade Rd. Drive 8.1 miles and turn right into Whitney Preserve.

* The Whitney Preserve Nature trail is open to the public daily from dawn to dusk. The first portion of the trail is wheelchair accessible.

** Bev's Bunkhouse is available for use by partners and conservation groups with permission. Call the preserve manager at the phone number above for more information.